

CPD Home Program Guide

CPD MADE EASY

2026



Contents

Welcome Home	3
CPD HOME PROGRAM	4
Interpreting Supporting Evidence Examples	7
How to achieve your CPD requirements	8
CPD Plan	8
Engage in CPD activities	8
Templates	8
Supporting evidence	8
Reflecting on CPD activities	8
Mandatory requirements	9
What are CAPE aspects?	10
Specialist High-level CPD Requirements	11
CPD Reports	11
CPD Monitoring	12
CPD Audits	12
CPD Home Audits	12
MBA Audits	12
Evidence retention	12
Exemptions	13
Extensions	13
CPD Statement of Completion	13
We're Here to Help	15



Welcome Home

THANK YOU FOR CHOOSING **CPD HOME**. WE HOPE YOU ENJOY YOUR 2026 CPD JOURNEY.

50
hrs



OUR PROGRAM

We are proud of our practical, easy-to-use website and mobile platform. Our CPD Program and platform have been meticulously refined to provide a comprehensive framework that addresses your scope of practice and supports career-long professional development at every stage of your medical career. Using our platform, you can streamline your CPD journey, ensuring you meet all requirements of the Standard, while maximising your learning experience. With CPD Home, you can be confident that all your CPD needs are met in one place.

OUR CPD TRACKER

Your Dashboard allows you to track your progress through the CPD Tracker and serves as a centralised location to monitor your compliance.

Our CPD Tracker is designed with your convenience in mind. It allows you to quickly transfer completed CPD activities and supporting evidence from another accredited CPD home in one upload. You can also upload independently completed CPD activities, and the CPD hours will be automatically reflected on your Dashboard. This feature also applies to activities completed through the CPD Home Catalogue, making it a comprehensive and user-friendly tool for managing your CPD compliance.

YOUR COMPLIANCE

As your chosen CPD home provider, we are responsible for notifying Ahpra that you comply with the requirements of the Standard each year. This allows you to focus on your professional development, knowing that we are effectively managing your compliance status.

We have implemented system alerts on our website and app to ensure you complete your mandatory CPD requirements for the year. Our regular monitoring enables us to help you stay on track.

OUR SUPPORT

CPD Home is here to provide the support and guidance you need to complete your mandatory CPD requirements. We understand the importance of your professional development and are committed to making your CPD experience as smooth as possible. Our Quick Start Guides, available from your CPD Tracker menu, provide step-by-step guidance. If you need assistance or have questions along the way, don't hesitate to get in touch with our always helpful Customer Support Team who will endeavour to point you in the right direction. You can find our contact details at the end of this Program Guide, and on the [CPD Home website](#).

CPD Home Program

Educational Activities

CPD ACTIVITIES ARE NOT LIMITED TO THOSE LISTED
WITHIN EACH CATEGORY.

Min
12.5
hrs

GENERAL LEARNING

Examples of CPD Activities:

- Conference
- Course
- Lecture
- Podcast
- Professional reading
- Seminar / presentation
- Small group learning (SGL)
- Study tour
- Webinar
- Workshop / masterclass

LEADERSHIP & MANAGEMENT

Examples of CPD Activities:

- Accreditation Surveyor Training
- Committee / Board activities
- Health service / facility / department / practice management participation
- Meeting attendance
- Policy / advocacy / governance activities
- Report writing

PROFESSIONAL PRACTICE

Examples of CPD Activities:

- Communication skills
- Cultural safety, diversity, and inclusion
- Educational visit
- Medical indemnity
- Social media management
- Well-being and self-care planning

RESEARCH

Examples of CPD Activities:

- Clinical guidelines development
- Clinical research project
- Literature search
- Research grant application
- Scientific presentation

STRUCTURED EDUCATION

Examples of CPD Activities:

- Chair / panellist / convenor / presenter
- Coaching program development
- CPD activity / material development
- Exam preparation / participation
- Grand rounds
- Mentoring program development
- Post-graduate qualifications

EDUCATIONAL ACTIVITIES

OTHER EDUCATIONAL ACTIVITIES



See page 7 for a full list of examples of acceptable Supporting Evidence by activity type.

Max
25
hrs

Reviewing Performance

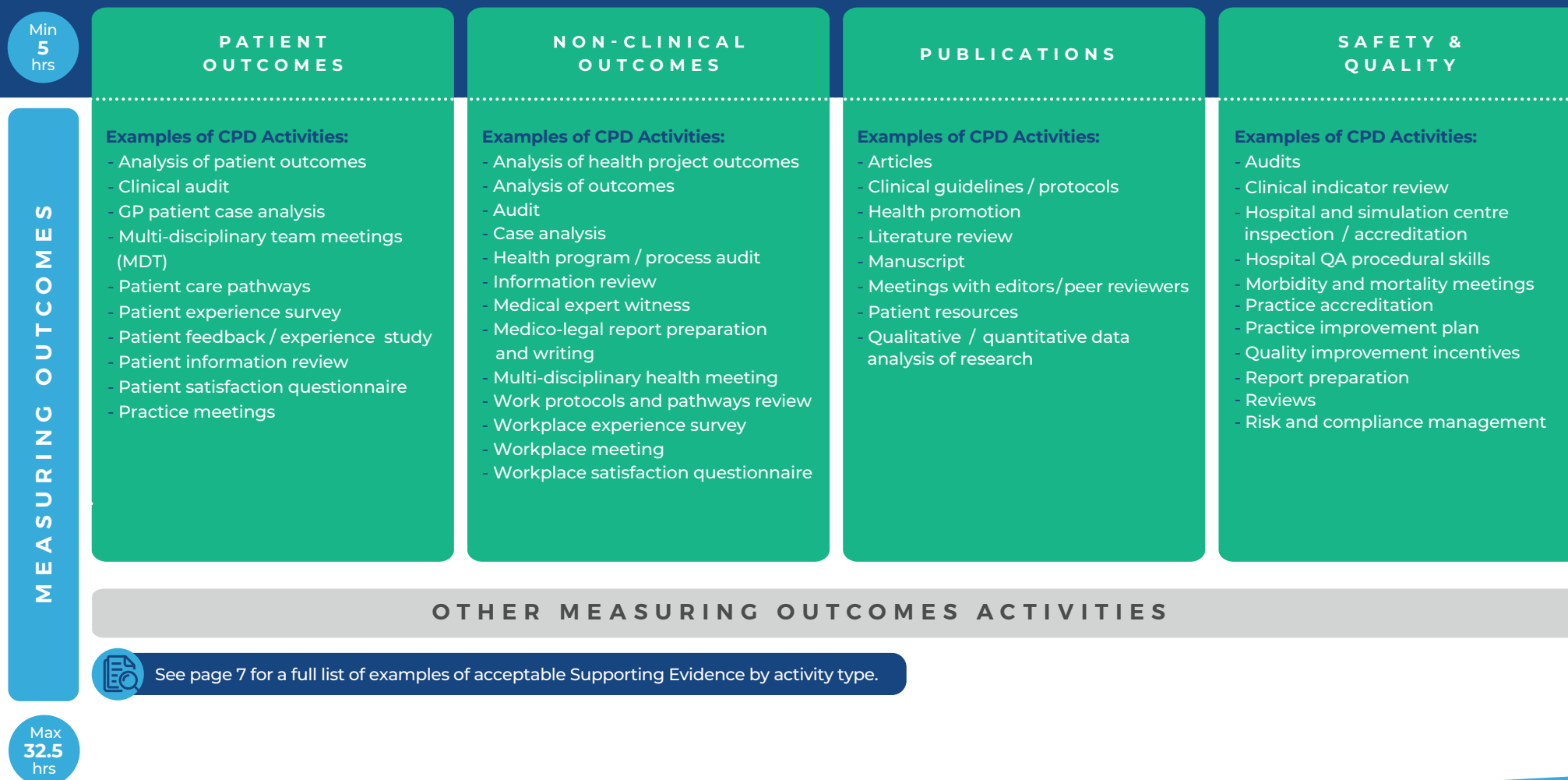
CPD ACTIVITIES ARE NOT LIMITED TO THOSE LISTED WITHIN EACH CATEGORY.

CPD Plan (Completion of your written CPD Plan and end of year reflection meets the mandatory minimum 5 hrs of Reviewing Performance activities)

Min 5 hrs	GENERAL LEARNING	MANAGEMENT & BUSINESS OPERATIONS	PEER REVIEW	PRACTICE REVIEW	PROFESSIONAL PERFORMANCE	QUALITY TEACHING & LEARNING
REVIEWING PERFORMANCE	Examples of CPD Activities: <ul style="list-style-type: none"> - Clinical attachment - Journal club - Skills simulator - Small group learning (SGL) 	Examples of CPD Activities: <ul style="list-style-type: none"> - Digital health security implementation - Financial business management - Office record review - Policies and procedures development and review 	Examples of CPD Activities: <ul style="list-style-type: none"> - Accreditation Surveyor - Assessment of junior doctors - Audit and data analysis - Case-based discussion - Educational activities review - Formal second opinion supervision - Observation of teaching methods - Performance review - Procedural case observation - Surgical assistance review 	Examples of CPD Activities: <ul style="list-style-type: none"> - Accreditation - Audit - Data set comparison - Department performance review - Hospital / practice QA activities review - Laboratory visit - Medical records review - Morbidity and mortality meeting - Significant event analysis 	Examples of CPD Activities: <ul style="list-style-type: none"> - 360° assessment - Individual performance appraisal - Mentoring program - Multi-source feedback - Procedural logbook - Supervision reflection - Well-being program 	Examples of CPD Activities: <ul style="list-style-type: none"> - Academic - Clinical teaching visit - Coach - Editor / Sub-Editor - Educator / Facilitator - Examiner - Mentor - Research Supervisor / Investigator / Co-Investigator - Supervisor - Volunteer
	OTHER REVIEWING PERFORMANCE ACTIVITIES					
	 See page 7 for a full list of examples of acceptable Supporting Evidence by activity type.					
Max 32.5 hrs						

Measuring Outcomes

CPD ACTIVITIES ARE NOT LIMITED TO THOSE LISTED WITHIN EACH CATEGORY.



Interpreting Supporting Evidence Examples

CPD Home understands that some CPD activities completed during your working day do not provide supporting evidence of participation.

The below tables provide guidance on our CPD Home designed logs and templates that we offer our Subscribers to demonstrate your participation in CPD activities where you do not have external supporting evidence.

To identify the CPD Home logs and templates that best support the type of CPD activity you are engaging in, please reference the tables below.

Note: All logs and templates can be found in the Resources menu of your CPD Tracker.

CPD Activity	Log	Template	Other
Academic / Educator / Facilitator	Activity log	-	Correspondence from organiser / administrator / employer certifying role
Accreditation	Meeting log	-	Correspondence from employer certifying role
Accreditation Surveyor	Meeting log	-	Correspondence from employer certifying role
Advocacy	Meeting log	-	Media transcripts
Analysis	Activity log	-	-
Appraisal	Activity log	-	-
Assessment	Activity log / Diarised discussion log	-	Correspondence from organiser / administrator / employer certifying role
Audit	-	Audit template	-
Business management	Activity log	-	Correspondence from employer confirming participation
Case-based discussion	Meeting log	-	-
Clinical attachment	Clinical attachment log	-	-
Clinical practice review	Diarised discussion log	-	-
Coaching	Activity log	-	Correspondence from organiser / administrator / employer certifying role
Committee participation	Activity log	-	Correspondence from employer / Chair / secretariat confirming participation
Compliance	Summary of findings log	-	-
Conference	-	-	Certificate
Course	-	-	Certificate
Data analysis	-	Audit template	-
Digital health security	Activity log	-	-
Discussion	Meeting log	-	Correspondence from organiser / employer confirming participation
Editor	Activity log	-	Title / copy of publication / correspondence from employer certifying role
Educational activities review	Activity log	-	Correspondence from organiser / administrator / employer certifying role
Examiner	Activity log	-	Correspondence from organiser / administrator / employer certifying role
Governance	Meeting log	-	Correspondence from AMA (federal, state, territory) confirming participation
Grand round	Meeting log	-	-
Grant application	Activity log	-	-
Guideline	Activity log	-	Title / copy of guideline
Journal club	Activity log	-	-
Lecture	-	-	Certificate
Literature search	Literature search log	-	-
Literature review	Literature search log	-	-
Medical expert witness	Activity log	-	Correspondence from organisation confirming participation
Medico-legal report	-	Medico-legal - Patient Report template	-
Meeting	Meeting log	-	-
Mentoring	Activity log	-	Correspondence from organisation confirming mentorship
Multi-source feedback	-	-	Certificate
Observation	Diarised discussion log	-	Correspondence from organiser / employer confirming participation

CPD Activity	Log	Template	Other
Operational Management	Activity log	-	Correspondence from employer confirming participation
Patient care pathway / information	Activity log	-	-
Patient feedback	Patient feedback log	-	-
Patient experience survey	Patient feedback log	-	-
Peer review	Diarised discussion log	-	-
Performance review	Diarised discussion log	-	-
Podcast	Activity log	-	Statement of attainment / participation / attendance
Policies / procedures	Activity log	-	Correspondence from entity seeking feedback / input OR letter of appointment to advisory group, meeting agendas
Practice management	Activity log	-	Correspondence from organiser / employer confirming participation
Presentation	Activity log	-	Correspondence from organiser / administrator / employer certifying role
Procedural logbook	Meeting log	-	-
Professional reading	Activity log	-	Certificate
Publication	Activity log	-	Title / copy of publication
Qualification	-	-	Course / PhD statement of participation / attainment
Quality improvement	Summary of findings log	-	-
Questionnaire	Activity log	-	Title / copy of questionnaire
Reflection	Activity log	-	-
Report	Activity log	-	Correspondence from organisation confirming participation
Research	Activity log	-	Title / copy of research project, activity log and outcome statement
Review	Summary of findings log	-	-
Root cause analysis	-	Root Cause Analysis template	-
Skills simulator	Activity log	-	Certificate
Small group learning	Meeting log	-	-
Social media management	Activity log	-	Screen shot
Study tour	Activity log	-	Itinerary, correspondence by organiser confirming attendance
Supervision	Activity log	-	Correspondence from organiser / administrator / employer certifying role as supervisor; OR review of supervisor support
Surgical assistance	Diarised discussion log	-	-
Survey	Activity log	-	Title / copy of survey questions
Teaching	Activity log	-	Correspondence from organiser / administrator / employer certifying role
Visit	Meeting log	-	Correspondence on details of visit OR Statement of attendance
Volunteer	Activity log	-	Correspondence from organisation confirming participation
Webinar	-	-	Certificate
Well-being	Activity log	-	Certificate (coursework only)
Workshop	-	-	Certificate
"Other"	-	-	Evidence relevant to the activity type. This may be set by the MBA in the case of specialist high-level CPD requirement activities.

How to achieve your CPD requirements

REST ASSURED, ACHIEVING YOUR PROFESSIONAL DEVELOPMENT HAS NEVER BEEN EASIER. WE HAVE STREAMLINED THE PROCESS. IT'S CPD TRACKING MADE SIMPLE!

CPD Plan

Use our CPD Plan to set your learning goals for 2026, identify your focus topic areas, and determine the activities that align with your registered scope of practice. You can update your plan throughout the year if you want to make any changes to your professional development direction.

Completing your written CPD Plan and reflection at the end of the CPD year will automatically earn you five (5) CPD hours for Reviewing Performance. Complete our self-paced online module 'Planning for Learning' to help guide you through this vital step.

Engage in CPD Activities

As a medical practitioner, engaging in robust, evidence-based CPD activities is easy with CPD Home. Our Catalogue contains a broad range of CPD activities from our Certified Learning Providers, Partners and CPD Activity Sponsors.

These activities address the Standard, so you can find learning that aligns with your registered scope of practice. All activities logged in the CPD Tracker, whether completed through our Contributors or recorded independently, are automatically added to your CPD Tracker.

Templates

We understand that completing a 'Reviewing Performance' CPD activity can be complex. To help you with this, we have created a set of templates to guide you through processes such as conducting an audit, performing a root-cause analysis, or writing a medico-legal patient report. These templates are available on the 'Resources' page once you log in to the CPD Home platform.

Supporting Evidence

Supporting evidence for your activities can be in various formats, like certificates of completion, and statements of attendance. However, not all completed activities receive certificates. We have created supporting evidence templates to help you record activities that do not provide a certificate, such as participating in a multi-disciplinary meeting. You can find the 'Activity Log' and 'Meeting Log' templates on the 'Resources' menu after logging on to your CPD Tracker.

Reflecting on CPD Activities

While this feature is optional, we recommend reflecting on your completed CPD activities. Reflection reinforces key messages learned and provides opportunities for self-assessment and identifying areas for improvement.

Mandatory requirements

TO COMPLY WITH THE STANDARD, YOU MUST COMPLETE A MINIMUM 50 CPD HOURS ANNUALLY. THIS INCLUDES COMPLETING YOUR CPD PLAN, LEARNING THAT ADDRESSES THE CAPE ASPECTS AND ANY SPECIALIST HIGH-LEVEL CPD REQUIREMENTS APPLICABLE TO SOME SPECIALTIES.

Medical practitioners who require a CPD home must comply with the Medical Board of Australia's Registration Standard: Continuing professional development (the Standard).

Source:
<https://www.medicalboard.gov.au/registration-standards.aspx>



EDUCATIONAL ACTIVITIES

Min
12.5
hrs

REVIEWING PERFORMANCE (INCLUDING CPD PLAN)

Min
5
hrs

MEASURING OUTCOMES

Min
5
hrs

Min
25
hrs

SPECIALIST HIGH-LEVEL CPD REQUIREMENTS (IF APPLICABLE)

What are **C A P E** aspects?

CAPE IS AN ACRONYM OF FOUR VALUABLE PRINCIPLES MEDICAL PRACTITIONERS MUST FULFILL WITHIN THEIR CPD YEAR.

UNDER THE STANDARD, DOCTORS ARE REQUIRED TO ENGAGE IN CAPE CPD ACTIVITIES ALIGNED TO THE MBA'S GOOD MEDICAL PRACTICE: A CODE OF CONDUCT FOR DOCTORS IN AUSTRALIA, 2020.

YOU MUST COMPLETE CPD ACTIVITIES ADDRESSING EACH OF THE FOLLOWING CAPE ASPECTS:



CULTURALLY SAFE PRACTICE

Is defined by the MBA (2020, pp.10) as “the ongoing critical reflection of health practitioner knowledge, skills, attitudes, practising behaviours and power differentials in delivering safe, accessible and responsive healthcare free of racism”.



ADDRESSING HEALTH INEQUITIES

Ensures that every person is entitled to high-quality healthcare regardless of their gender, ethnicity, geographic location and socioeconomic status.



PROFESSIONALISM

Duties, qualities and values embedded in medical practitioners to address the health care needs of individuals and communities with a commitment to maintain clinical skills, knowledge and judgement to deliver best practice models of care.



ETHICAL PRACTICE

Underpinning of the principles of care.

For more information on CAPE aspects, read our article [here](#).



SPECIALIST HIGH-LEVEL CPD REQUIREMENTS

Completing specialist high-level CPD requirements is mandatory for some specialists. Specialist high-level CPD requirements describe any educational activities, reviewing performance, or measuring outcomes activities that must be included in a specialist's CPD program. Below are the specialty high-level requirements approved by the Medical Board of Australia for 2025.

Specialty	HLR	Domain of Learning
Anaesthesia	<p>A specialist anaesthetist must complete at least one:</p> <ul style="list-style-type: none"> - emergency response activity per year - of the following activities per year to directly evaluate and reflect on their own clinical practice: <ul style="list-style-type: none"> • structured patient survey • peer review • multi-source feedback • clinical audit. 	<ul style="list-style-type: none"> - Educational Activity - Reviewing Performance and/or - Measuring Outcomes Activity
Emergency Medicine	<p>A specialist emergency medicine physician (including all fields of specialty practice) must:</p> <ul style="list-style-type: none"> - complete three core procedural skills per year: <ul style="list-style-type: none"> • 1x core airway procedural skill • 1x core breathing procedural skill • 1x core circulation procedural skill - complete one activity per year to reflect on and develop leadership skills that will contribute to <ul style="list-style-type: none"> • workplace improvement • system-wide improvement and/or • effective interdisciplinary teamwork 	<ul style="list-style-type: none"> - Educational Activity - any category
General Practice	A specialist general practitioner must complete a CPR (cardiopulmonary resuscitation) course every three years.	- Educational Activity
Intensive Care Medicine	<p>A specialist intensive care physician must complete an airway management of critically ill patients' activity ONCE every three years that is of a minimum three hours duration and involves an in-person practical workshop, preparatory and post activity components that specifically consider:</p> <ul style="list-style-type: none"> • airways assessment • approaches to difficult airway and airway emergencies • teamwork and leadership in an airway crisis • familiarity with equipment • CICO algorithms (can't intubate, can't oxygenate) • management of tracheostomy emergencies • simulation activities that should include performing intubation on appropriate mannequins to expose participants to difficult airway scenarios and include team-based responses. 	- Educational Activity
Obstetrics and Gynaecology	<p>A specialist obstetrician and gynaecologist must complete an in-person Basic Life Support (BLS) program every two years.</p> <p>While coursework can be completed online, the assessment must be completed in-person.</p>	- Educational Activity

Specialty	HLR	Domain of Learning
Pain Medicine	<p>A specialist pain medicine physician must complete at least one:</p> <ul style="list-style-type: none"> - emergency response activity per year - of the following activities per year to directly evaluate and reflect on their own clinical practice: <ul style="list-style-type: none"> • structured patient survey • peer review • multi-source feedback • clinical audit. 	<ul style="list-style-type: none"> - Educational Activity - Reviewing Performance and/or - Measuring Outcomes Activity
Psychiatry	A specialist psychiatrist must complete a minimum of 10 hours of formal peer review per year.	- Reviewing Performance
Radiology	A specialist radiologist must complete anaphylaxis training as part of basic or advanced life support training once every three years.	- Educational Activity
Sport and Exercise Medicine	<p>A specialist sport and exercise physician must complete:</p> <ul style="list-style-type: none"> - WADA/Sport Integrity Australia anti-doping education every three years; and - ANY ONE of the following courses in every three-year period: <ul style="list-style-type: none"> • management of Sports Trauma course (MOST) • basic cardiac life support course (BCLS) • advanced cardiac life support course (ACLS) • AFL Emergency Care Course • immediate care in rugby course (Level 2/3 course). 	- Educational Activity
Surgery (except OMS)	<p>A specialist surgeon (including all fields of specialty practice except OMS) must participate in the Australia and New Zealand Audit of Surgical Mortality (ANZASM) by completing all surgical case forms sent by ANZASM.</p> <p>If by 31 December of the CPD year you have not received a form, you will need to make a declaration on your AMA CPD Home Tracker to comply with the HLR.</p>	<ul style="list-style-type: none"> - Reviewing Performance and/or - Measuring Outcomes Activity

CPD Reports

Sometimes, you need a compliance record to show your CPD compliance is on track. This could be for a job application or for your current employer. We have created a set of reports that give you a real-time summary of your accomplishments. These reports can be printed as a PDF document.

The 'Progress Report' is evidence of your active participation in your CPD requirements. The 'CPD Report' provides a more detailed view, including a comprehensive list of completed CPD activities and the evidence associated with each. You can generate these reports by logging on to your CPD Tracker and clicking the 'Reports' menu.

CPD Monitoring

WE ARE HERE TO HELP YOU MEET YOUR CPD REQUIREMENTS. WE WILL PERFORM QUARTERLY MONITORING REVIEWS OF YOUR PROGRESS THROUGHOUT THE CPD YEAR TO SAFEGUARD YOUR COMPLIANCE AND PROVIDE ADEQUATE COUNSEL AND SUPPORT, IF REQUIRED.

The monitoring reviews will address key mandatory elements, such as completing your CPD Plan and CPD hours and uploading your supporting evidence. If we contact you, it simply means we're offering our assistance to help you stay on track.

CPD Audits

AS AN ACTIVE SUBSCRIBER, YOU MAY BE SUBJECT TO AN AUDIT BY EITHER AMA CPD HOME OR THE MBA.



AMA CPD Home Audits

At the end of the CPD year, we will conduct audits on 5% of our Subscribers to confirm the fulfilment of mandatory CPD requirements and the completeness of supporting documentation. If you claim to have completed an activity, you also need the accepted evidence in your CPD Activity Summary, so please ensure that this information is readily available in the event of an audit. If you are chosen for an audit and found to be 'Yet to meet' your CPD requirements, we will provide the necessary support to help you achieve compliance.

MBA Audits

When the MBA conducts an audit, it is essential to showcase compliance with the CPD Home Program for the specified CPD year. The CPD Report is valuable evidence of fulfilling all obligatory prerequisites and obtaining the CPD Statement of Completion. In the event of an MBA audit, we stand ready to support you with our Audit Assist service, included with the Concierge Subscription plan or Home Subscription plan + Audit Assist for the CPD year the audit is being conducted.

Evidence Retention

For verification purposes, please keep duplicates of your CPD Report upon reaching 50 CPD hours and fulfilling all mandatory requirements, in addition to the CPD Statement of Completion. Keep your annual CPD records for at least three (3) years after the conclusion of each CPD year.

Exemptions

REMEMBER, IF YOU FIND YOURSELF IN A SITUATION WHERE YOU NEED AN EXEMPTION FROM THE ANNUAL CPD PROGRAM, DON'T WORRY.

Exemptions may be approved upon application, especially if you are on extended leave and not engaged in clinical practice. In such cases, an exemption may be granted after you submit the Recognition of Exceptional Circumstance application form available from the CPD Home website. Rest assured that all applications will be reviewed case-by-case and may take up to six (6) weeks.

To get more information, read the CPD Home Exceptional Circumstances and Special Consideration Policy, which can be found on the CPD Home website, before applying for an exemption.

Extensions

ONCE THE CPD YEAR ENDS, AN AUTOMATIC GRACE PERIOD WILL BE ACTIVATED TO ALLOW YOU TO FINALISE THE PRIOR YEAR, UPLOAD YOUR SUPPORTING EVIDENCE AND REFLECT ON YOUR CPD PLAN.

On 31 December each year, an automatic grace period from 1 January to 31 May the following CPD year will be activated on your CPD Tracker, so you can finalise your previous year's CPD records. This includes your CPD plan, recording your 50 hours of completed CPD to meet the Standard, and uploading your supporting evidence for auditing purposes.

We are required to report your CPD compliance to Ahpra by 30 June. Your annual Statement of Completion downloaded from your Dashboard provides you with evidence of your compliance.

Should you need additional time, an extension to finalise your CPD records can be requested by emailing enquiries@cpdhome.org.au before we report your compliance to Ahpra. Requests will be reviewed on a case-by-case basis.

CPD Statement of Completion

YOUR CPD STATEMENT OF COMPLETION WILL BE AVAILABLE FOR DOWNLOAD UPON MEETING ALL MANDATORY REQUIREMENTS.

We are thrilled to celebrate your achievement with you and provide you with this official recognition of your hard work and dedication. If you do not meet the mandatory requirements, don't worry. We understand that challenges can arise, and we are here to support you every step of the way.



Disclaimer

This publication contains material that has been provided by doctorportal Learning Pty Ltd, trading as CPD Home, and may contain material provided by the Australian Medical Council (AMC), Australian Health Practitioner Regulation Agency (Ahpra) and its National Boards, and third parties. Copyright in material provided to AMC, Ahpra or third parties belongs to them. CPD Home owns the copyright to all material in this publication that has been developed by CPD Home. The information outlined in this publication is current at the time of publication and is intended for use as a guide of a general nature only.



In the spirit of reconciliation AMA CPD Home acknowledges the Traditional Custodians of country throughout Australia and their connections to land, sea and community. We pay our respect to their Elders past and present and extend that respect to all Aboriginal and Torres Strait Islander peoples today.

Source: www.indigenous.gov.au/contact-us/welcome_acknowledgement-country



WE'RE HERE TO HELP!

At CPD Home, we are committed to providing you with the help you need to succeed in your CPD journey.

If you have any questions or need further assistance, the AMA CPD Home Team can be contacted Monday to Friday between 9 AM and 5 PM (AEST).



1800 CPD HOME (1800 273 466)

enquiries@cpdhome.org.au

www.cpdhome.org.au

© 2026 Doctorportal Learning Pty Ltd | ABN 65 630 316 942

LAST UPDATED: NOVEMBER 2025

VERSION: 1.1