

2024 REGISTRATION CHANGES

Are you ready?







For **ongoing medical registration**, doctors must join an Australian Medical Council (AMC) approved CPD home.

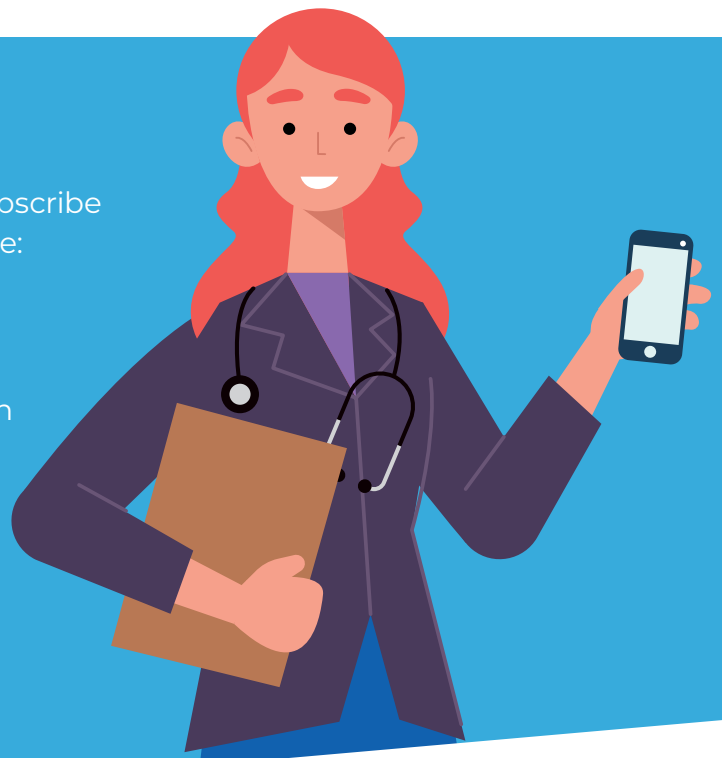
From 1 January 2024, Australian doctors need to comply with the new CPD registration standard.

Under the Medical Board of Australia's new Registration Standard: *Continuing professional development* (the Standard), Australian doctors requiring a CPD home can no longer self manage their CPD, and must join an Australian Medical Council (AMC) approved CPD home.

Does this affect me?

Australian registered doctors required to subscribe to a CPD home **from 1 January 2024** include:

-  medical specialists
-  IMGs not on a specialist pathway, with limited or provisional registration
-  PGY3+ doctors not in a specialty training program
-  all other general registration doctors including non-vocationally registered medical practitioners.



Mandatory CPD requirements

To meet the Standard, doctors are required to:

1. write a **CPD plan**
2. meet the **minimum hour requirements** across the two domains of learning (below), including high-level CPD requirements approved by MBA where relevant to your registered scope of practice
3. reflect on your **planned learning goals** at the end of the CPD year

Your **CPD home will submit** your CPD compliance to the Australian Health Practitioner Regulation Agency (Ahpra).



Download the **CPD Home Program Guide** to find out more about accepted CPD activities



What are CPD homes?

CPD homes are AMC accredited providers that help doctors meet the Standard.

Your CPD home will help you to plan and track CPD activities relevant to your scope of practice, and report your annual compliance to Ahpra.

Welcome Home

cpd home | AMA

Achieve your CPD compliance with ease.

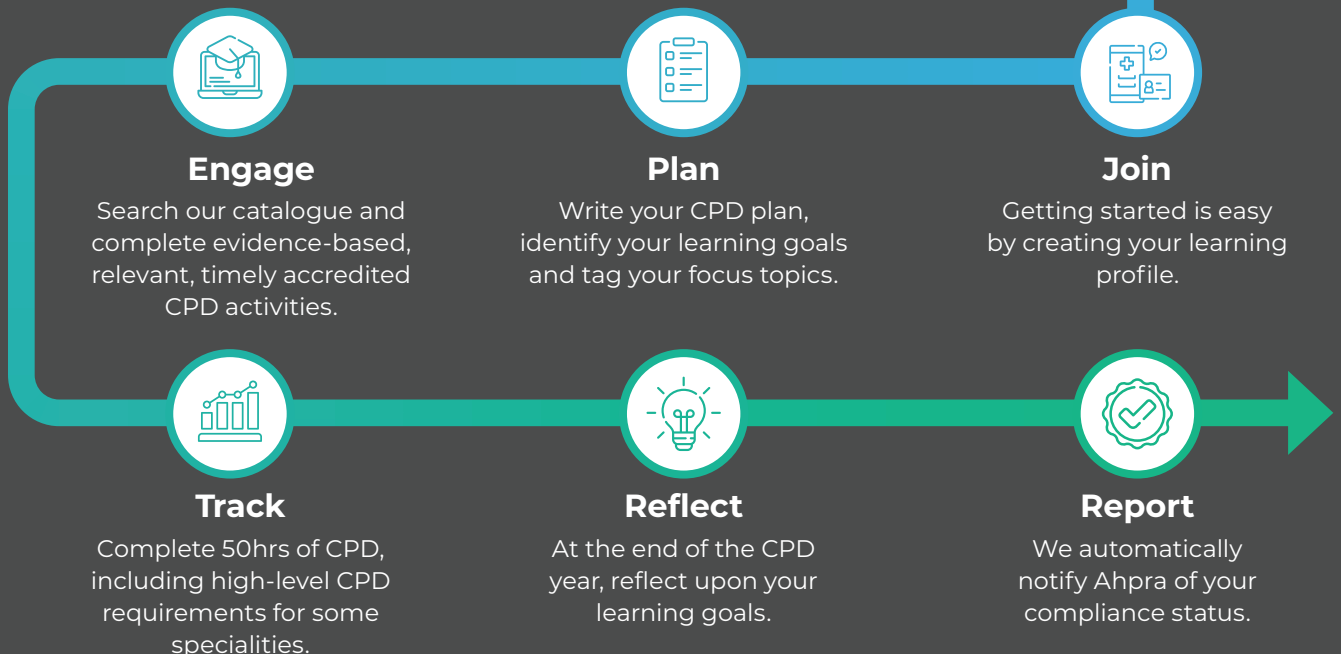
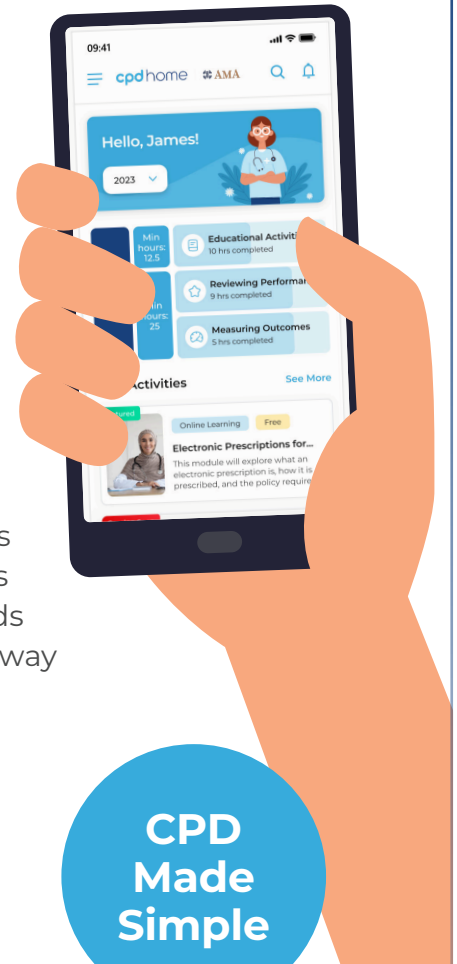
At CPD Home, **we understand.**

We understand the **new Standard** and how best to support you to stay compliant each year.

At CPD Home we:

- provide **full support** to guide you through the new challenges
- uncover your **daily work hours** that translate to CPD activities
- help you target CPD activities that address your learning needs
- offer a **flexible range** of subscriptions to suit your career pathway
- provide a **broad catalogue** of accredited CPD activities
- enable you to take control of your CPD **anytime, anywhere.**
- **support all doctors** who require a CPD home

Trust the AMA's CPD Home, accredited by the AMC, to guide your CPD journey.



Contact CPD Home for more support and choice, today.

Email: enquiries@cpdhome.org.au
Phone: 1800 CPDHOME (1800 273 466)
cpdhome.org.au